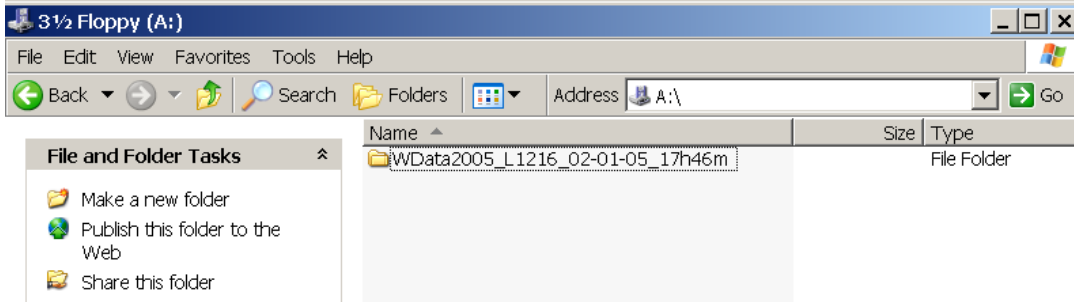


WinStabs 2005 data integrity is very important

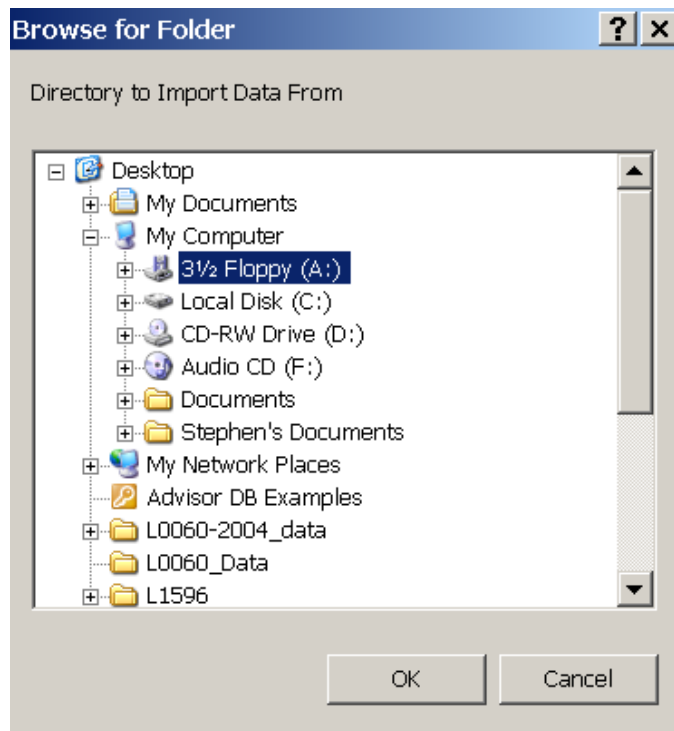
When you EXPORT data, use choose option 1, Export to The program exports information to a Folder named in this format below.



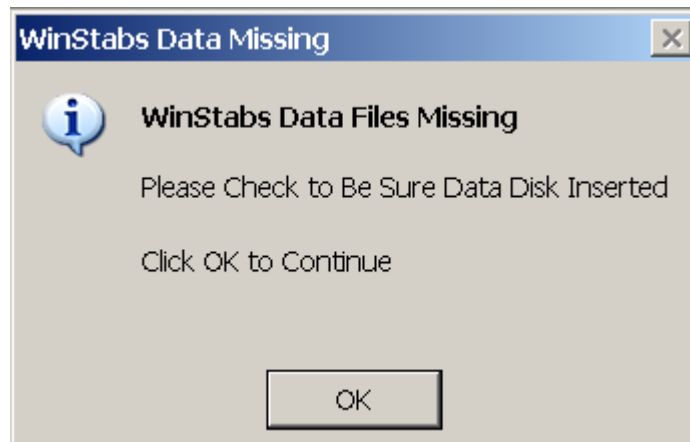
WData2005_Lxxxx_MM/DD/YYYY_xhxxm

Now there is a folder with 2005 Data, located in A Drive from Local 1216, made on 2-1-2005 at 1746 (5:46pm)

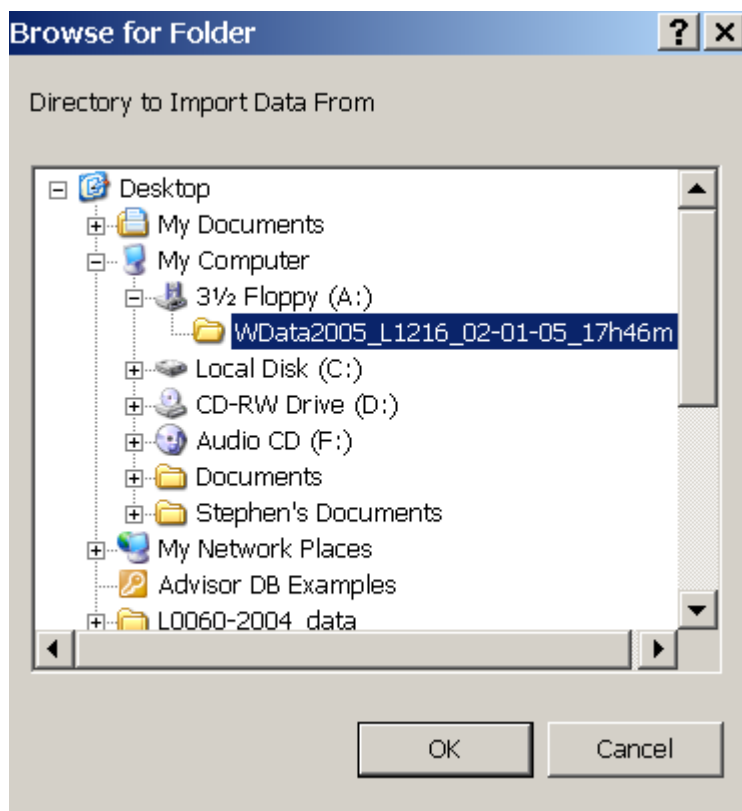
In this example we want to Import the above information into WinStabs. I have chosen A Drive.



An error is received by WinStabs, as I've chosen A Drive, NOT the folder with the data on A Drive.



The data is NOT missing, it just wasn't chosen. The above example clicking on the PLUS sign next to A Drive will get the following choice. The plus sign turns to a negative sign, and all folders existing on A Drive will be shown.



Your data will then be imported properly. This extra step of importing means you CANNOT accidentally erase your information on your 3 1/2 floppy A: drive.